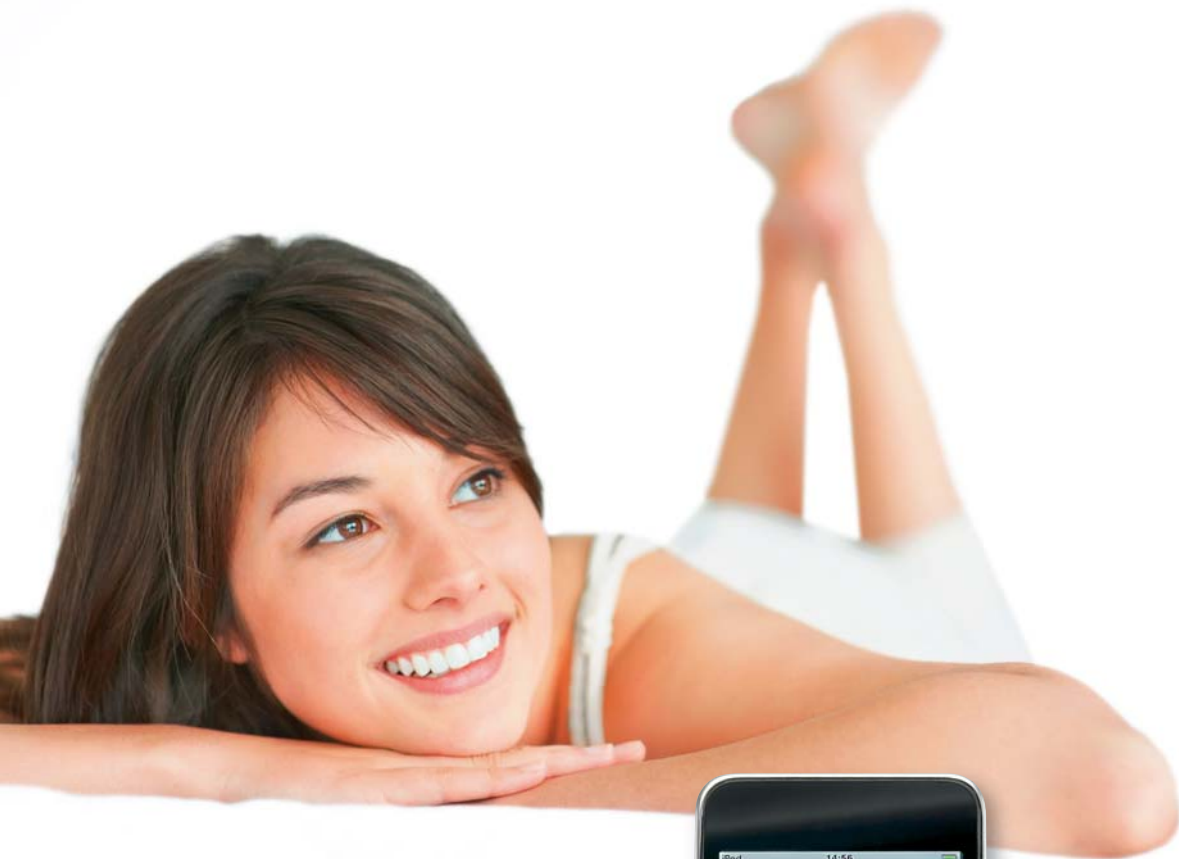


# JUNG



## The Ultimate Sound Experience

Music centre and radio for wall mounting



## Music Centre

Docking station with a real sound experience

The docking station in the JUNG design for your MP3 player, iPod and iPhone is simply built into the wall in a flush-mounted box. The music centre and the associated loudspeaker modules can be installed individually or combined. A high-quality tone is guaranteed due to the integrated bass reflex enclosures – regardless of whether you would rather listen in mono or stereo. The music centre also has outputs for connection to hi-fi and multiroom systems as well as a stereo input for external playback devices. The charging function for iPods, iPhones or mobile devices with a mini USB connection is a particularly practical feature as it saves you having to use external charging devices. And for optimum convenience, you can either control your music centre via infrared remote control or directly at the device.



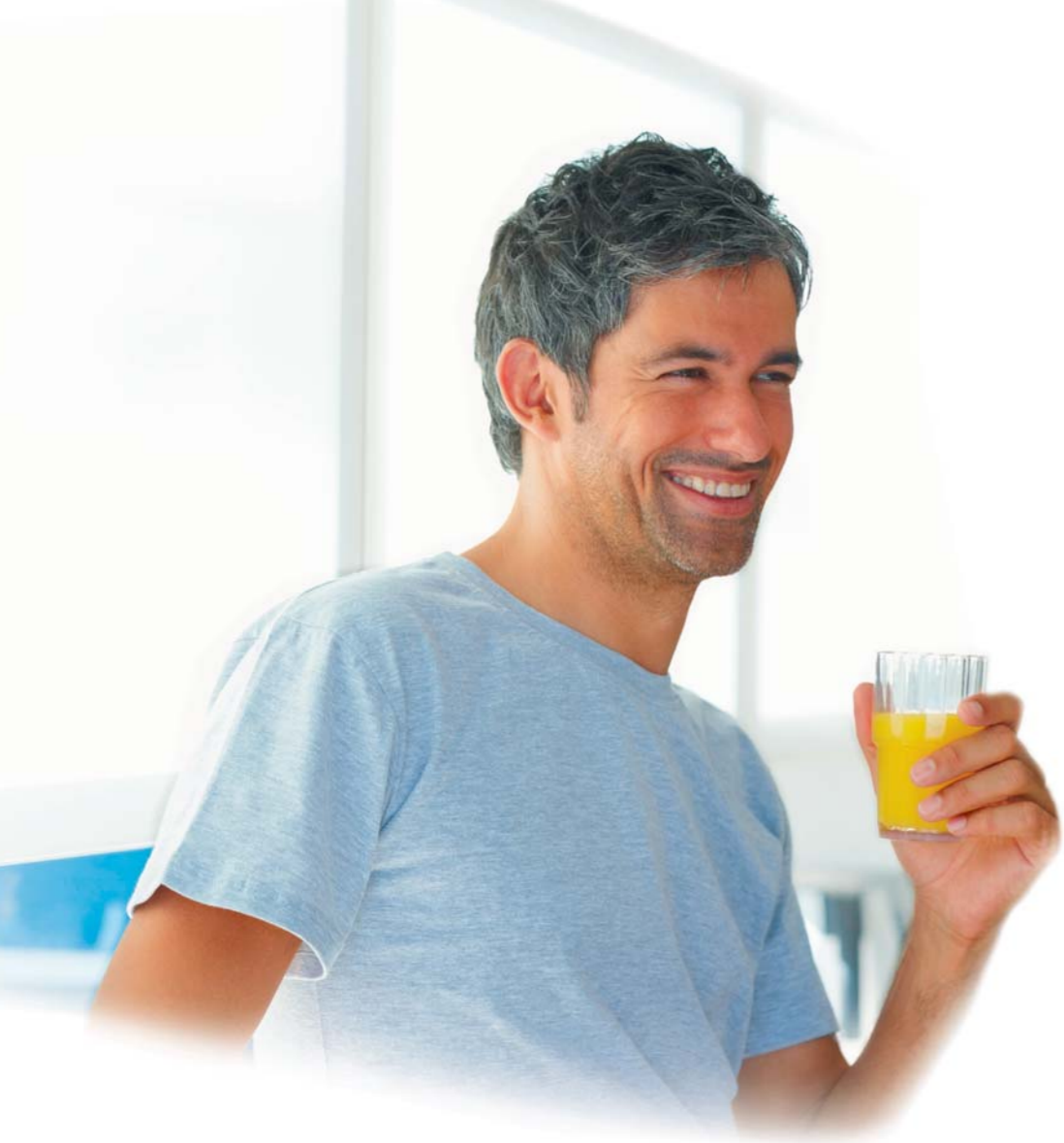
You can mount the music centre and loudspeaker modules individually or combined in multiple frames – exactly as you like.



# JUNG

## The JUNG Radio

More than just a radio



As with the music centre, great loudspeaker dynamics and optimum tone is guaranteed with the JUNG radio through the use of bass reflex enclosures. The frequency range of the radio lies between 87.5 and 108 MHz (VHF), whereby you can rely on the best reception quality thanks to the integrated antenna. Radio functions such as station tuning and storage of the four stations with the best reception are of course also available. But the JUNG radio can do much more: you can therefore not only use it as a radio alarm clock via an external time switch but also couple it with the room lighting via the extension input – you can thus switch on the news when you switch on the light in the bathroom or kitchen. If required, you can also activate the integrated sleep mode. This ensures that your radio switches itself off after 30 minutes.



## Music Centre Technical information

### Music centre

- Stationary docking station for mobile MP3 players and iPods
- Installation in flush wall boxes in accordance with DIN 49 073
- Charging function for iPods, iPhones and MP3 players
- External stereo input with 3.5 mm jack socket
- Integrated stereo amplifier
- Direct connection of loudspeakers

### Loudspeaker module

Nominal power rating: approx. 2.5 W  
 Impedance: 4 Ω  
 Frequency range: 120 ... 15000 Hz (-10 dB)  
 Connection: screw terminals  
 Max. conductor cross-section: 2.5 mm<sup>2</sup>  
 High-quality tone and great loudspeaker dynamics  
 Optimised acoustics through use of a bass reflex enclosure

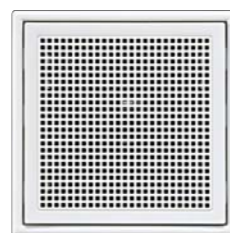
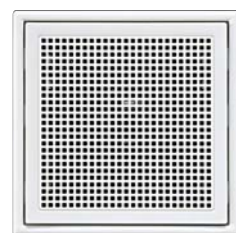


The combination of a music centre and loudspeaker modules in a 3-gang frame enables high-quality stereo sound.

The control of the music centre is carried out conveniently via IR remote control or directly at the device.



The wall mounting can be vertical or horizontal, combined in a 2-gang frame.



If installed individually, the components can be distributed around the room.

## The JUNG Radio Technical information

### Product characteristics

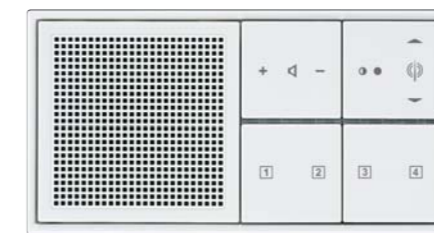
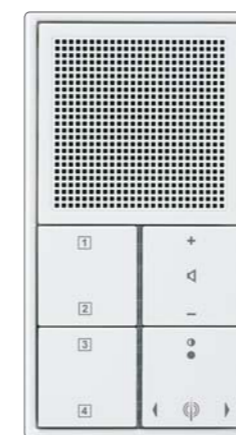
- Simple operation with additional status LEDs  
 Blue LED lights up: operational display  
 Blue LED flashes: sleep mode active  
 Red LED: favourite station
- High-quality tone and great loudspeaker dynamics
- Optimised acoustics through use of a bass reflex enclosure
- Integrated VHF antenna
- High reception quality
- Automatic and manual station tuning
- Permanent storage of 4 stations (the stored stations are retained after voltage failure)
- Switch on with the last selected station at the saved volume
- Sleep mode (switch off after approx. 30 minutes)
- Switching on/off possible via extension input
- Installation in two flush-mounted connector sockets (recommendation: deep box)
- For horizontal and vertical installation
- VHF reception in the frequency range 87.5 MHz to 108 MHz

### Satellite input function

The radio has two different satellite inputs – potential-free or 230 V. The radio can also be switched on and off via remote control. Via the 230 V input of the power unit, the radio can be switched on for example with the room lighting. To do so, the switched phase is applied to the 230 V extension input. It is possible to connect e.g. a switch to the potential-free input of the radio which can be used to switch the radio on/off. Through the connection of a timer with a make contact, the radio can also be used as a radio alarm clock.

### Technical data

Nominal voltage: AC 230/240 V ~, 50/60 Hz  
 Frequency range: 87.5 MHz ... 108 MHz  
 Connection: Screw terminals  
 2.5 mm<sup>2</sup> or 2 x 1.5 mm<sup>2</sup>



All design variants of the radio can be mounted horizontally or vertically – exactly as you like.

# JUNG

## Variety is the key

A musical experience in switch design? This is possible thanks to the well-conceived JUNG modular system! The music centre and JUNG radio are available for you in numerous design ranges to suit any interior décor: shape, colour and function in perfect harmony.



Certified proof of origine  
„Made in Germany“ by TÜV Nord.

ALBRECHT JUNG GMBH & CO. KG  
P.O. Box 1320  
58569 Schalksmühle  
Germany  
Phone: +49.23 55.80 6158  
Fax: +49.23 55.80 6370  
E-Mail: [mail.vka@jung.de](mailto:mail.vka@jung.de)

For sales contacts in your country see:  
[www.jung-salescontact.com](http://www.jung-salescontact.com)